

ORACLE WAREHOUSE MANAGEMENT

ORACLE®

E-BUSINESS SUITE

KEY FEATURES:

MOBILITY

- Mobile RF-based execution user interfaces
- Leverages AIDC technologies such as Barcode and RFID
- Personalize mobile transaction forms for user needs
- Compliance with UCC, EAN and other GTIN product labeling standards
- RFID automated transactions
- Material handling systems integration
- Voice pick capabilities

INBOUND LOGISTICS

- Receiving (ASN & Non-ASN Based) and inspection
- Directed put away
- Multi-step material routings

INVENTORY CONTROL

- Lot, subplot, serial and revision control
- Dual unit of measure control (catchweight)
- Material attribute tracking
- Flexible material status & holds
- Consigned and vendor managed inventory
- Demand driven replenishment and forward picking locations

Oracle® Warehouse Management (WMS) enables companies to maximize their utilization of labor, space and equipment investments by coordinating and optimizing resource usage and material flows across a global supply chain on a single platform.

Broad Based Support for Warehouse Processes

Oracle WMS provides a robust warehouse solutions platform to efficiently manage the flow of goods and warehouse resources across a wide variety of business processes- including order fulfillment, manufacturing, field service, inbound logistics- from receipt, inspection to storage, counting and replenishment.

Optimize Warehouse Resources

Oracle WMS enables users to optimize resources such as storage space, labor and equipments using rules based execution. Putaway rules based on configurable parameters like velocity, volume and material classifications rules can be used to minimize fragmentation, enforce storage policies, reduce obsolescence or implement other storage restrictions. Similarly pick tasks for outbound orders can be generated considering one or more goals such as reduction in material handling (tasks for full or split cases), reduce travel time (nearest location), minimize obsolescence (FIFO) or other customer specific preferences (grade, color, size, etc).

Advanced Wave and Task Planning

Using wave planning, Oracle WMS can fulfill a large number of orders quickly by streamlining the full execution process. Oracle WMS provides a flexible and powerful planning tool with a dashboard to create, plan and track wave progress, drilldown to task or line level and the ability to configure exceptions to facilitate proactive resolution of issues. Advanced Wave Planning also includes task planning features that can be used to group and dispatch tasks based on an execution criteria.

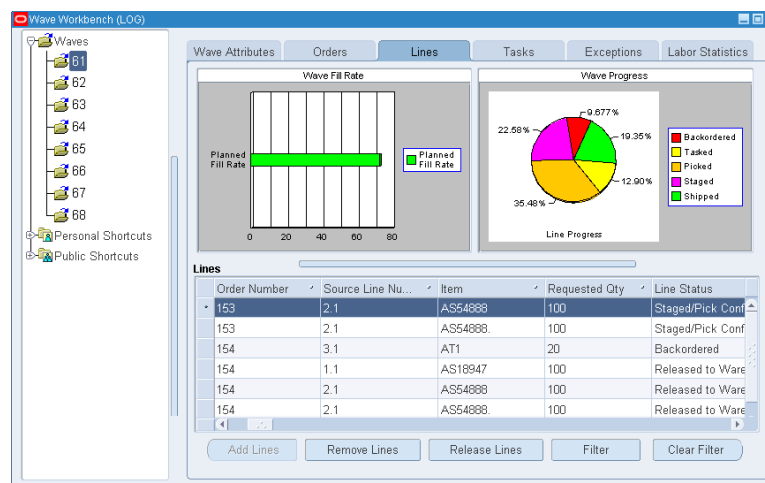


Figure 1: Advanced Wave and Task Planning Dashboard

TASK MANAGEMENT

- Complete labor management solution
- Flexible pick methodologies such as cluster/batch pick, zone pick, pick and pass, order pick and wave pick
- Rules based task dispatching and product allocation
- Cartonization, guided consolidation and packing
- Automated task prioritization & reprioritization
- Managerial monitoring dashboards
- Manufacturing and service components picking
- Finished goods completion & put away

Outbound Logistics

- Advanced wave and task planning
- Directed picking, consolidation and trailer loading
- ASN generation
- Integration with Oracle Transportation Management for dock appointment and, load sequencing

Planned and Opportunistic Crossdocking

Oracle WMS can identify crossdocking opportunities in the warehouse by matching expected receipts with outbound shipments and manufacturing component requirements using flexible crossdock rules. These rules allow the users to have greater of control over supply and demand eligibility for crossdocking and minimize the product wait time product in outbound staging areas before getting crossdocked.

Demand Driven Replenishment to Forward Pick Locations

Oracle WMS offers Push and Pull based replenishments to forward pick area for warehouses to efficiently pick high volume of orders lines. The Pull replenishment feature automatically creates a replenishment task when a potential shortage is detected in the forward pick area. The dynamic replenishment execution capability ensures that pick areas are replenished with minimal oversight and pick tasks are dispatched only when material is available to pick. Push based replenishment allows a warehouse to effectively manage a surge in demand e.g., promotions by replenishing a forward pick area based on future demand visibility of an item.

Improve Loading Efficiency and Dock Door Utilization

Oracle WMS facilitates integrated transportation planning and execution by leveraging the dock door appointments created in Oracle Transportation Management (OTM). Oracle WMS ensures that orders are released based on the dock appointments and material is staged to the correct dock door. Oracle WMS improves trailer loading by recommending loading of containers in the reverse stop sequence of a multi-stop shipping itinerary.

Support for Advanced and Non-traditional Warehousing Processes

Competitive pressures and globalization is forcing traditional warehouses to take on value added services previously reserved for manufacturing and service centers. It is forcing manufacturing centers to take on warehousing and order fulfillment activities. Oracle WMS offers advanced material and resource handling capabilities for these additional business flows.

Repair Services, Returns, Disposition, Teardown and Refurbishment

Oracle WMS also offers the materials management feature set required in reverse logistics operations. Users can define required return product flow to guide subsequent inspection and rework processing (repair, teardown, etc.). This enables users to seamlessly manage reverse logistics operations in the same distribution centers that handle vendor receipts and customer order fulfillment.

Manufacturing, Assembly and Distribution

Oracle WMS provides a seamlessly integrated system for all manufacturing execution processes including repair and maintenance business processes. Oracle WMS supports component picks for discrete jobs and schedules, ingredient picks for process manufacturing batches, parts picks for maintenance work orders and repair orders generated in Enterprise Asset Management or Depot Repair.

Adapt to Changing Needs

To adapt to rapidly changing business requirements driven by customers, regulatory bodies, new product introductions, fluctuating demand and global outsourcing, Oracle

WMS provides a configurable, rules-based infrastructure that easily adapts to changing business needs and compliance mandates without customization.

Distributed Deployment of Oracle Warehouse Management

Customers can deploy WMS in a decentralized environment that is physically decoupled from rest of the E-Business Suite (EBS), making it possible to leverage the latest features in WMS but with older EBS installation or potentially non-EBS host systems. Distributed WMS also ensures greater availability of WMS instance, it is an “always on” solution that is unaffected by the network connection or the general availability of the host system.

Pick Method Suited for Warehouse Business Needs

Oracle WMS provides flexibility to warehouses to choose a pick methodology that is aligned with the ordering profile of the item. It supports pick and pass, zone picking and cluster picking to reduce warehouse travel. It enables one-step pick and pack directly into shipping cartons thus eliminating downstream packing operations.

Personalized Mobile User Interfaces and Workflow Processing

Oracle WMS facilitates efficient transaction processing by enabling users to configure mobile transaction pages for their specific needs. This allows the user to view or enter only the required information that is needed to complete the transaction for a specific business context. The difference before and after the feature is shown in Figure 2.

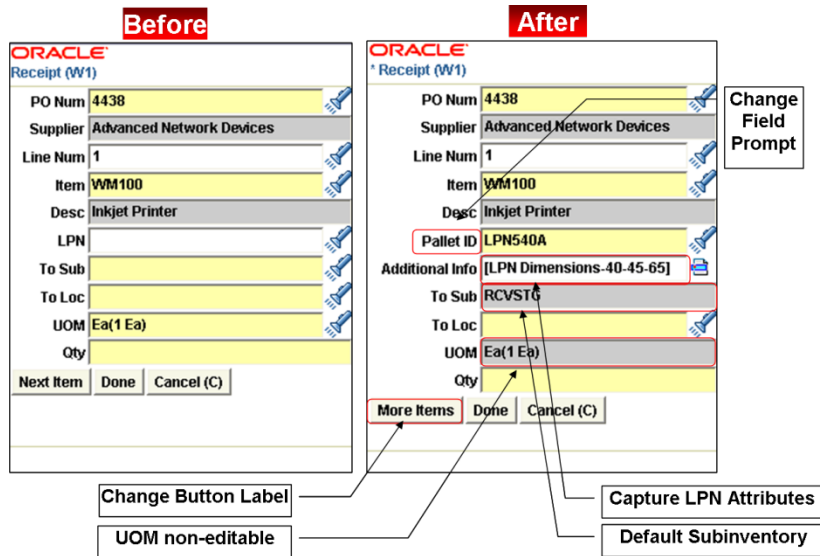


Figure 2: Mobile transaction screenshot before and after the personalization

Rules-Driven Processes

Oracle WMS has, at its core a flexible and powerful business rules engine, which permits extensive tailoring of key WMS processes such as directed picking and put-away, labeling, material routing selection and task dispatching without the need to customize code as shown in Figure 2. This extensible rules based architecture enables key processes to evolve and adapt dynamically.

RFID Enabled

Oracle WMS provides out of the box support for RFID and EPC technology for

KEY BENEFITS**BENEFITS OF ORACLE WAREHOUSE MANAGEMENT INCLUDE:**

- Improve warehouse space, labor and resource utilization
- Support advanced and nontraditional warehousing business flows
- Enable customers to adapt to changing business needs & environments

RELATED PRODUCTS

Oracle Warehouse Management is fully integrated with

- Oracle Inventory
- Oracle Order Management
- Oracle Work In Process
- Oracle Procurement
- Oracle Transportation Management
- Oracle Enterprise Asset Management
- Oracle Purchasing
- Oracle Financials
- Oracle Process Manufacturing
- Oracle Flow Manufacturing

RELATED SERVICES

The following services are available from Oracle Support Services:

- Oracle E-Business Suite Accelerators
- Oracle University
- Oracle Consulting

addressing RFID labeling compliance. EPC's can be extracted from an inbound ASN and provided on outbound ASN's to customers. Oracle WMS also provides a flexible framework to automate any warehouse transaction via RFID or any other sensor based on an event detection infrastructure.

Device Agnostic Material Handling Equipment Integration

Warehouse Control System (WCS) feature in Oracle WMS provides out of the box integration with material handling equipment such as conveyors, carousels, ASRSs, pick to light and even voice directed picking systems. Customers can deploy diverse equipments using an open API device integration to request tasks, and receive responses from diverse equipment types. Managerial workbenches enable real-time monitoring of the equipment and provide real-time visibility to the entire automation environment.

Oracle E-Business Suite—The Complete Solution

Oracle E-Business Suite enables companies to efficiently manage customer processes, manufacture products, ship orders, collect payments, and more—all from applications that are built on unified information architecture. This information architecture provides a single definition of your customers, suppliers, employees, and products—all aspects of your business. Whether you implement distributed WMS or the entire Suite, Oracle E-Business Suite enables you to share unified information across the enterprise so you can make smarter decisions with better information.

Conclusion

Oracle WMS enables organizations to transform their materials management operations to agile fulfillment centers through optimal use of inventory supply and warehouse resources. It leverages a flexible framework that provides supply and demand matching, advanced task management, automation hardware support and support for the breadth of materials management processes frequently required in warehouses, manufacturing facilities and service depots.

Contact Us

For more information about [insert product name], please visit oracle.com or call +1.800.ORACLE1 to speak to an Oracle representative.



Oracle is committed to developing practices and products that help protect the environment

Copyright © 2009, Oracle and/or its affiliates. All rights reserved.

This document is provided for information purposes only and the contents hereof are subject to change without notice. This document is not warranted to be error-free, nor subject to any other warranties or conditions, whether expressed orally or implied in law, including implied warranties and conditions of merchantability or fitness for a particular purpose. We specifically disclaim any liability with respect to this document and no contractual obligations are formed either directly or indirectly by this document. This document may not be reproduced or transmitted in any form or by any means, electronic or mechanical, for any purpose, without our prior written permission.

Oracle is a registered trademark of Oracle Corporation and/or its affiliates. Other names may be trademarks of their respective owners.